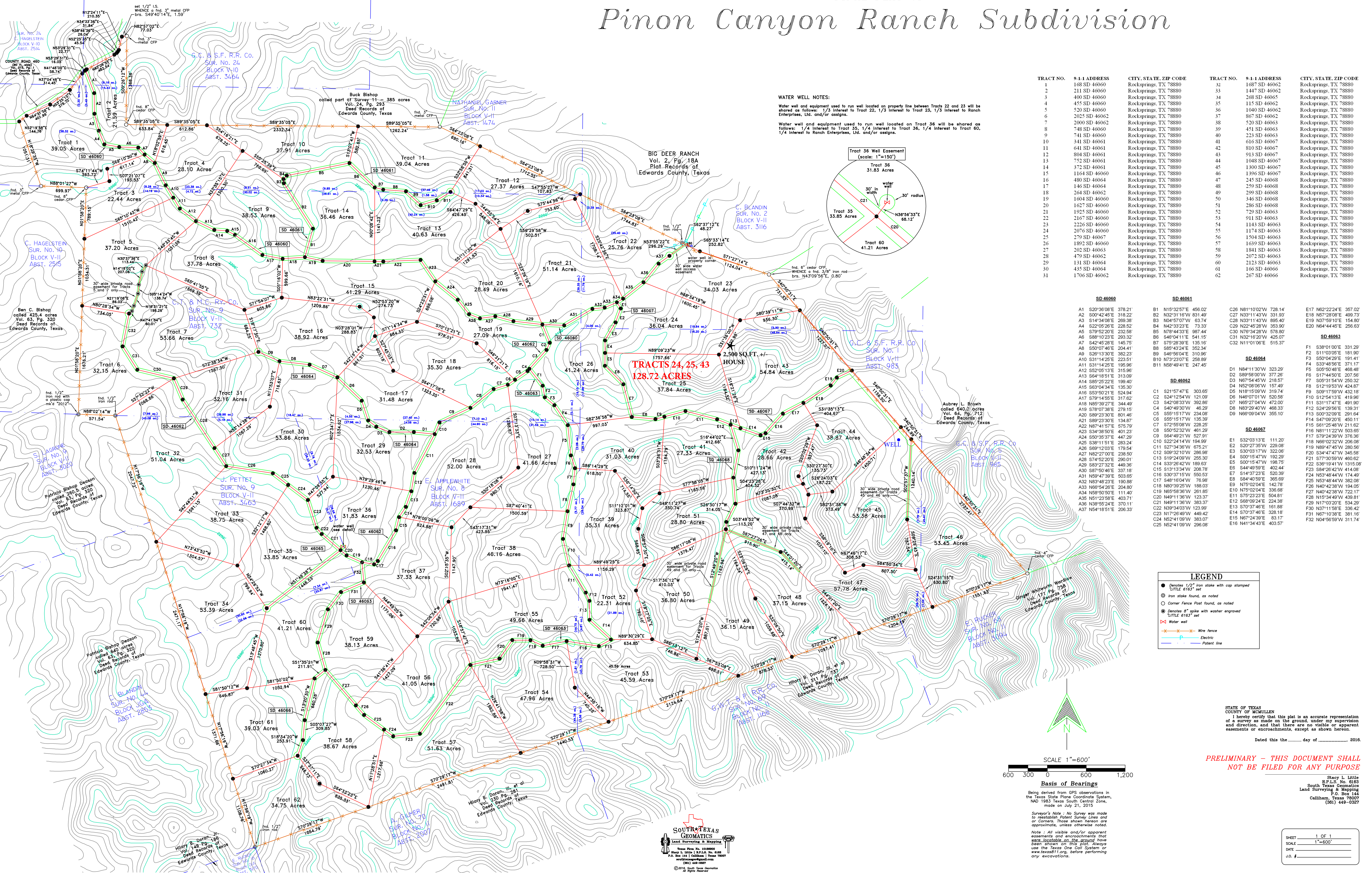


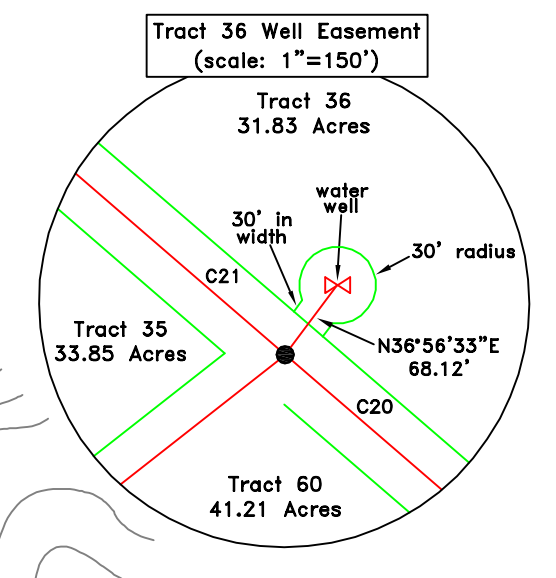
FINAL PLAT OF Pinon Canyon Ranch Subdivision



WATER WELL NOTES:

Water well and equipment used to run well located on property line between Tracts 22 and 23 will be shared as follows: 1/3 interest to Tract 22, 1/3 interest to Tract 23, 1/3 interest to Ranch Enterprises, Ltd. and/or assigns.

Water well and equipment used to run well located on Tract 36 will be shared as follows: 1/4 interest to Tract 35, 1/4 interest to Tract 36, 1/4 interest to Tract 60, 1/4 interest to Ranch Enterprises, Ltd. and/or assigns.

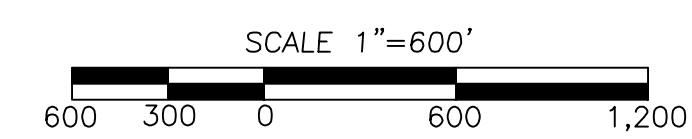


TRACT NO.	9-1-1 ADDRESS	CITY, STATE, ZIP CODE	TRACT NO.	9-1-1 ADDRESS	CITY, STATE, ZIP CODE
1	168 SD 46060	Rocksprings, TX 78880	32	1687 SD 46062	Rocksprings, TX 78880
2	211 SD 46060	Rocksprings, TX 78880	33	1447 SD 46062	Rocksprings, TX 78880
3	400 SD 46060	Rocksprings, TX 78880	34	268 SD 46065	Rocksprings, TX 78880
4	455 SD 46060	Rocksprings, TX 78880	35	115 SD 46062	Rocksprings, TX 78880
5	520 SD 46060	Rocksprings, TX 78880	36	1040 SD 46062	Rocksprings, TX 78880
6	2025 SD 46062	Rocksprings, TX 78880	37	867 SD 46062	Rocksprings, TX 78880
7	2000 SD 46062	Rocksprings, TX 78880	38	520 SD 46063	Rocksprings, TX 78880
8	748 SD 46060	Rocksprings, TX 78880	39	451 SD 46063	Rocksprings, TX 78880
9	741 SD 46060	Rocksprings, TX 78880	40	223 SD 46063	Rocksprings, TX 78880
10	341 SD 46060	Rocksprings, TX 78880	41	616 SD 46067	Rocksprings, TX 78880
11	641 SD 46061	Rocksprings, TX 78880	42	810 SD 46067	Rocksprings, TX 78880
12	804 SD 46061	Rocksprings, TX 78880	43	913 SD 46067	Rocksprings, TX 78880
13	752 SD 46061	Rocksprings, TX 78880	44	1048 SD 46067	Rocksprings, TX 78880
14	372 SD 46061	Rocksprings, TX 78880	45	1300 SD 46067	Rocksprings, TX 78880
15	1164 SD 46060	Rocksprings, TX 78880	46	1396 SD 46067	Rocksprings, TX 78880
16	480 SD 46064	Rocksprings, TX 78880	47	245 SD 46068	Rocksprings, TX 78880
17	146 SD 46064	Rocksprings, TX 78880	48	259 SD 46068	Rocksprings, TX 78880
18	264 SD 46060	Rocksprings, TX 78880	49	299 SD 46068	Rocksprings, TX 78880
19	1604 SD 46060	Rocksprings, TX 78880	50	346 SD 46068	Rocksprings, TX 78880
20	1627 SD 46060	Rocksprings, TX 78880	51	286 SD 46068	Rocksprings, TX 78880
21	1925 SD 46060	Rocksprings, TX 78880	52	729 SD 46063	Rocksprings, TX 78880
22	2167 SD 46060	Rocksprings, TX 78880	53	911 SD 46063	Rocksprings, TX 78880
23	2226 SD 46060	Rocksprings, TX 78880	54	1143 SD 46063	Rocksprings, TX 78880
24	2076 SD 46060	Rocksprings, TX 78880	55	1174 SD 46063	Rocksprings, TX 78880
25	279 SD 46067	Rocksprings, TX 78880	56	150 SD 46063	Rocksprings, TX 78880
26	1893 SD 46060	Rocksprings, TX 78880	57	293 SD 46063	Rocksprings, TX 78880
27	202 SD 46060	Rocksprings, TX 78880	58	1841 SD 46063	Rocksprings, TX 78880
28	479 SD 46062	Rocksprings, TX 78880	59	2072 SD 46063	Rocksprings, TX 78880
29	131 SD 46064	Rocksprings, TX 78880	60	2123 SD 46063	Rocksprings, TX 78880
30	435 SD 46064	Rocksprings, TX 78880	61	166 SD 46066	Rocksprings, TX 78880
31	1706 SD 46062	Rocksprings, TX 78880	62	267 SD 46066	Rocksprings, TX 78880

SD 46060	SD 46061	SD 46062	SD 46063	SD 46064	SD 46065	SD 46066
A1 S20°36'08"E 378.21'	B1 N15°32'57"E 456.02'	C26 N81°10'22"W 728.14'	E17 N62°22'24"E 357.02'	D1 N84°11'30"W 323.29'	F1 S38°01'00"E 331.29'	I1 S32°03'13"E 111.20'
A2 S00°42'45"E 318.22'	B2 N32°31'16"W 831.45'	C27 N33°11'43"W 331.83'	E18 N87°28'08"E 499.73'	D2 S89°58'00"W 377.26'	F2 S11°03'05"E 181.90'	I2 S20°27'35"W 229.08'
A3 S14°30'08"E 289.38'	B3 N04°57'07"W 63.74'	C28 N33°11'43"W 895.40'	E19 N37°59'10"E 154.80'	D3 N87°54'45"W 218.57'	F3 S50°04'29"E 191.41'	I3 S30°31'17"W 322.06'
A4 S22°05'26"E 228.52'	B4 N42°33'23"E 73.33'	C29 N22°45'28"W 353.90'	E20 N64°44'45"E 256.63'	D4 N52°08'06"W 157.49'	F4 S34°45'56"E 371.17'	I4 N88°02'35"W 206.08'
A5 S79°52'20"E 232.58'	B5 N78°44'33"E 987.44'	C30 N76°34'28"W 578.80'	F1 S38°01'00"E 331.29'	D5 N18°15'09"W 319.74'	F5 S05°50'48"E 468.48'	I5 N89°47'45"W 280.56'
A6 S88°10'32"E 293.32'	B6 S48°04'11"E 541.15'	C31 N32°16'20"W 425.07'	F2 S11°03'05"E 181.90'	D6 N46°07'01"W 520.58'	F6 S17°44'50"E 207.56'	I6 N89°58'56"W 251.85'
A7 S42°45'28"E 145.75'	B7 S75°28'39"E 135.16'	C32 N11°01'08"E 515.37'	F3 S50°04'29"E 191.41'	D7 N89°27'04"W 472.00'	F7 S09°15'54"W 250.32'	I7 N59°44'09"E 438.19'
A8 S50°07'46"E 204.41'	B8 S85°43'24"E 352.34'	C33 N11°01'08"E 515.37'	F4 S34°45'56"E 371.17'	D8 N83°29'40"W 468.33'	F8 S09°17'59"W 432.18'	I8 N80°39'25"W 188.03'
A9 S28°13'30"E 382.23'	B9 S48°56'04"E 310.96'	D1 N84°11'30"W 323.29'	F5 S05°50'48"E 468.48'	D9 N66°09'04"W 355.10'	F9 S017'59"W 432.18'	I9 N75°02'04"E 142.78'
A10 S31°14'25"E 223.51'	B10 S48°56'04"E 310.96'	D2 S89°58'00"W 377.26'	F6 S17°44'50"E 207.56'	E1 S32°03'13"E 111.20'	F10 S12°54'13"E 419.96'	I10 N75°02'04"E 142.78'
A11 S31°14'25"E 195.96'	B11 N58°49'41"E 247.45'	D3 N87°54'45"W 218.57'	F7 S09°15'54"W 250.32'	D10 N52°08'06"W 157.49'	F11 S31°17'47"E 491.90'	I11 S75°23'23"E 504.81'
A12 S52°05'13"E 315.96'	B12 S85°43'24"E 352.34'	D11 N58°49'41"E 247.45'	F8 S017'59"W 432.18'	D11 N58°49'41"E 247.45'	F12 S24°29'56"E 193.31'	I12 S68°09'24"E 224.38'
A13 S64°18'51"E 313.09'	B13 S85°43'24"E 352.34'	D12 S89°58'00"W 377.26'	F9 S017'59"W 432.18'	D12 S89°58'00"W 377.26'	F13 S00°20'29"E 291.64'	I13 S47°09'25"E 450.11'
A14 S85°25'22"E 159.40'	B14 S85°43'24"E 352.34'	D13 N73°23'07"E 258.89'	F10 S12°54'13"E 419.96'	D13 N73°23'07"E 258.89'	F14 S47°09'25"E 450.11'	I14 S61°25'40"W 211.62'
A15 S63°04'34"E 135.30'	B15 S85°43'24"E 352.34'	D14 N52°08'06"W 157.49'	F11 S31°17'47"E 491.90'	D14 N52°08'06"W 157.49'	F15 S05°50'48"E 468.48'	I15 N81°11'22"W 503.65'
A16 S53°50'21"E 524.84'	B16 S85°43'24"E 352.34'	D15 N18°15'09"W 319.74'	F12 S24°29'56"E 193.31'	D15 N18°15'09"W 319.74'	F16 S17°44'50"E 207.56'	I16 S79°24'39"W 376.36'
A17 S79°14'55"E 317.62'	B17 S85°43'24"E 352.34'	D16 N46°07'01"W 520.58'	F13 S00°20'29"E 291.64'	D16 N46°07'01"W 520.58'	F17 S12°54'13"E 419.96'	I17 N88°02'35"W 206.08'
A18 N85°39'27"E 344.48'	B18 S85°43'24"E 352.34'	D17 N89°27'04"W 472.00'	F14 S47°09'25"E 450.11'	D17 N89°27'04"W 472.00'	F18 S09°17'59"W 432.18'	I18 N89°47'45"W 280.56'
A19 S78°10'32"E 279.15'	B19 S85°43'24"E 352.34'	D18 N83°29'40"W 468.33'	F15 S05°50'48"E 468.48'	D18 N83°29'40"W 468.33'	F19 S017'59"W 432.18'	I19 N75°02'04"E 142.78'
A20 S89°23'30"E 801.46'	B20 S85°43'24"E 352.34'	D19 N66°09'04"W 355.10'	F16 S17°44'50"E 207.56'	D19 N66°09'04"W 355.10'	F20 S34°47'47"W 345.58'	I20 S47°09'25"E 450.11'
A21 S89°23'30"E 134.87'	B21 S85°43'24"E 352.34'	D20 N52°08'06"W 157.49'	F17 S12°54'13"E 419.96'	D20 N52°08'06"W 157.49'	F21 S79°30'59"W 460.62'	I21 S38°01'00"E 331.29'
A22 N67°41'57"E 575.79'	B22 S85°43'24"E 352.34'	D21 S89°58'00"W 377.26'	F18 S09°17'59"W 432.18'	D21 S89°58'00"W 377.26'	F22 S38°01'00"E 331.29'	I22 S64°26'42"W 189.63'
A23 S43°38'05"E 401.23'	B23 S85°43'24"E 352.34'	D22 S89°58'00"W 377.26'	F19 S89°47'45"W 280.56'	D22 S89°58'00"W 377.26'	F23 S04°26'42"W 189.63'	I23 S47°09'25"E 450.11'
A24 S50°39'57"E 447.29'	B24 S85°43'24"E 352.34'	D23 S72°55'08"W 228.25'	F20 S34°47'47"W 345.58'	D23 S72°55'08"W 228.25'	F24 S64°49'59"E 402.44'	I24 N63°48'44"W 174.49'
A25 S38°11'51"E 283.24'	B25 S85°43'24"E 352.34'	D24 S50°52'32"W 461.29'	F21 S79°30'59"W 460.62'	D24 S50°52'32"W 461.29'	F25 S38°01'00"E 331.29'	I25 N63°48'44"W 174.49'
A26 S89°12'03"E 179.54'	B26 S85°43'24"E 352.34'	D25 S64°49'21"W 527.91'	F22 S38°01'00"E 331.29'	D25 S64°49'21"W 527.91'	F26 N40°42'38"W 194.05'	I26 N84°09'24"E 224.38'
A27 N62°27'02"E 238.50'	B27 S85°43'24"E 352.34'	C1 S21°57'47"E 303.65'	F23 S04°26'42"W 189.63'	C1 S21°57'47"E 303.65'	F27 N40°42'38"W 194.05'	I27 N75°02'04"E 142.78'
A28 S74°52'20"E 290.01'	B28 S85°43'24"E 352.34'	C2 S24°12'54"W 121.09'	F24 S64°49'59"E 402.44'	C2 S24°12'54"W 121.09'	F28 N15°54'40"E 438.19'	I28 N17°03'02"E 534.29'
A29 S83°27'32"E 449.36'	B29 S85°43'24"E 352.34'	C3 S30°31'17"W 322.06'	F25 N63°48'44"W 174.49'	C3 S30°31'17"W 322.06'	F29 N17°03'02"E 534.29'	I29 S70°37'46"E 161.88'
A30 S87°50'46"E 337.18'	B30 S85°43'24"E 352.34'	C4 S40°49'30"W 46.29'	F26 N53°48'44"W 174.49'	C4 S40°49'30"W 46.29'	F30 N17°03'02"E 534.29'	I30 N67°24'39"E 83.17'
A31 N89°58'56"E 204.80'	B31 S85°43'24"E 352.34'	C5 S55°15'17"W 135.39'	F27 N53°48'44"W 174.49'	C5 S55°15'17"W 135.39'	F31 S47°09'25"E 450.11'	I31 N67°24'39"E 83.17'
A32 N83°48'23"E 199.88'	B32 S85°43'24"E 352.34'	C6 S55°15'17"W 135.39'	F28 N40°42'38"W 194.05'	C6 S55°15'17"W 135.39'	F32 N04°56'59"W 311.74'	I32 N04°56'59"W 311.74'
A33 N66°54'25"E 204.80'	B33 S85°43'24"E 352.34'	C7 S72°55'08"W 228.25'	F29 N40°42'38"W 194.05'	C7 S72°55'08"W 228.25'		
A34 N65°50'50"E 111.40'	B34 S85°43'24"E 352.34'	C8 S50°52'32"W 461.29'	F30 N17°03'02"E 534.29'	C8 S50°52'32"W 461.29'		
A35 S51°23'58"E 403.71'	B35 S85°43'24"E 352.34'	C9 S64°49'21"W 527.91'	F31 S47°09'25"E 450.11'	C9 S64°49'21"W 527.91'		
A36 N88°55'24"E 370.11'	B36 S85°43'24"E 352.34'	C10 S22°24'14"W 194.99'	F32 N04°56'59"W 311.74'	C10 S22°24'14"W 194.99'		
A37 N54°18'51"E 206.33'	B37 S85°43'24"E 352.34'	C11 S27°34'36"W 675.21'		C11 S27°34'36"W 675.21'		
	B38 S85°43'24"E 352.34'	C12 S09°32'10"W 286.98'		C12 S09°32'10"W 286.98'		
	B39 S85°43'24"E 352.34'	C13 S19°24'09"W 255.30'		C13 S19°24'09"W 255.30'		
	B40 S85°43'24"E 352.34'	C14 S33°26'42"W 189.63'		C14 S33°26'42"W 189.63'		
	B41 S85°43'24"E 352.34'	C15 S13°13'47"W 206.78'		C15 S13°13'47"W 206.78'		
	B42 S85°43'24"E 352.34'	C16 S30°37'15"W 550.53'		C16 S30°37'15"W 550.53'		
	B43 S85°43'24"E 352.34'	C17 S48°16'04"W 76.98'		C17 S48°16'04"W 76.98'		
	B44 S85°43'24"E 352.34'	C18 N80°39'25"W 188.03'		C18 N80°39'25"W 188.03'		
	B45 S85°43'24"E 352.34'	C19 N65°58'56"W 251.85'		C19 N65°58'56"W 251.85'		
	B46 S85°43'24"E 352.34'	C20 N49°11'36"W 123.37'		C20 N49°11'36"W 123.37'		
	B47 S85°43'24"E 352.34'	C21 N49°11'36"W 383.37'		C21 N49°11'36"W 383.37'		
	B48 S85°43'24"E 352.34'	C22 N39°34'03"W 123.99'		C22 N39°34'03"W 123.99'		
	B49 S85°43'24"E 352.34'	C23 N17°26'49"W 448.42'		C23 N17°26'49"W 448.42'		
	B50 S85°43'24"E 352.34'	C24 N62°41'09"W 296.08'		C24 N62°41'09"W 296.08'		

LEGEND

- Denotes 1/2" iron stake with cap stamped 'LITTLE 6163' set
- ⊙ Iron stake found, as noted
- ⊙ Corner Fence Post found, as noted
- ⊙ Denotes 8" spike with washer engraved 'LITTLE 6163' set
- ✕ Water well
- Wire fence
- Electric fence
- Potential line



Basis of Bearings
Being derived from GPS observations in the Texas State Plane Coordinate System, NAD 1983 Texas South Central Zone, made on July 21, 2015.

Surveyor's Note: No Survey was made to reestablish Patent Survey Lines and/or Corners. Those shown hereon are approximate, unless otherwise noted.

Note: All visible and/or apparent easements and encroachments that were locatable on the ground have been shown on this plat. Always use the Texas One System or www.texas811.org, before performing any excavations.

STATE OF TEXAS
COUNTY OF McMULLEN
I hereby certify that this plat is an accurate representation of a survey as made on the ground, under my supervision and direction, and that there are no visible or apparent encroachments or encroachments, except as shown hereon.

Dated this _____ day of _____, 2016.

PRELIMINARY - THIS DOCUMENT SHALL NOT BE FILED FOR ANY PURPOSE

Stacy L. Little
R.P.L.S. No. 0163
South Texas Geomatics
Land Surveying & Mapping
P.O. Box 144
Callahan, Texas 76007
(817) 449-0367

SHEET 1 OF 1
SCALE 1"=600'
DATE _____
J.O. # _____

